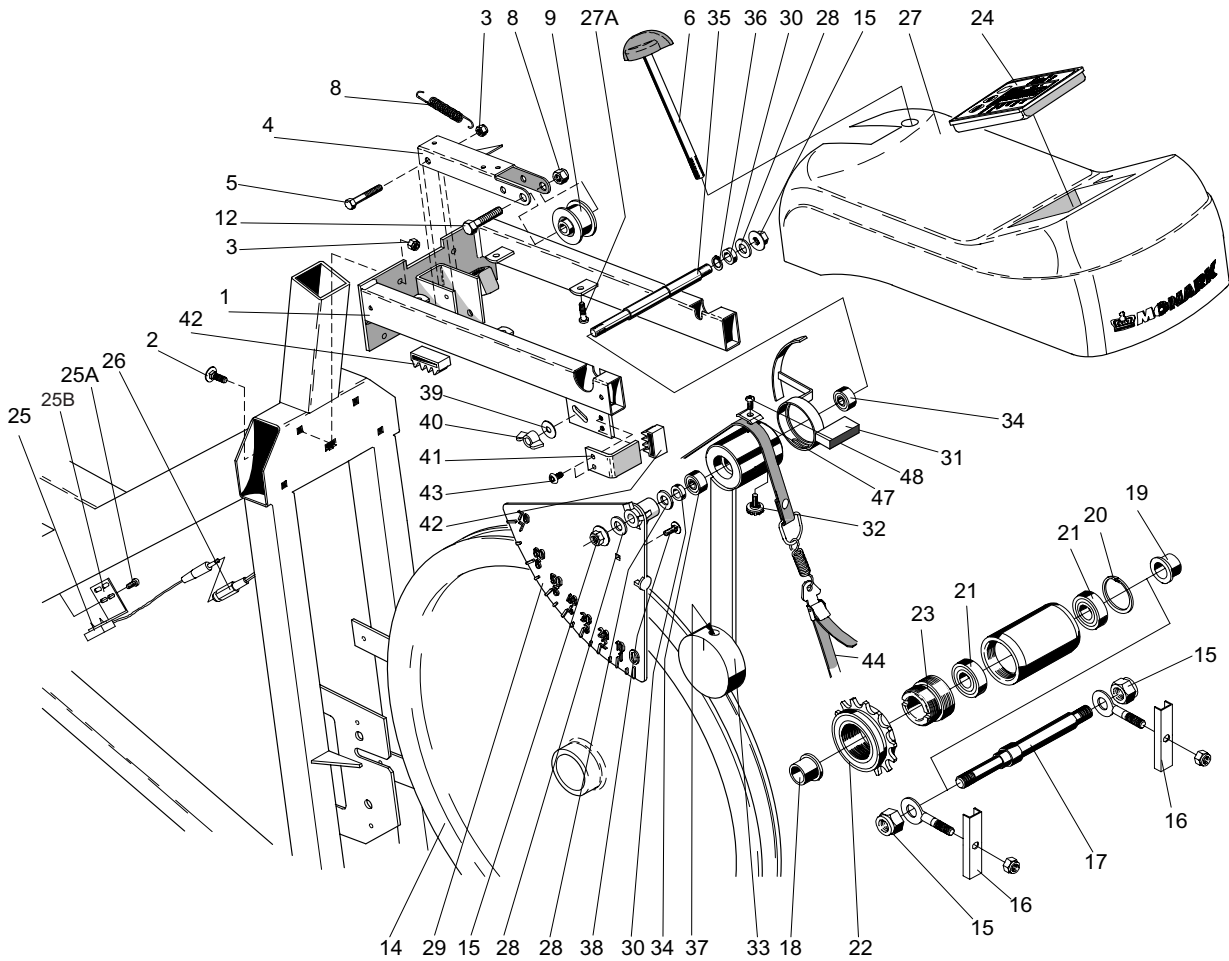


Article no	Qty.	Pict.no.	Description	Article no.	Qty.	Pict.no.	Description
9300-5	1	1	Support tube, front	9300-113	1	18	Saddle post
9300-6	1	2	Support tube, rear	4992-5	1	19	Saddle
9300-7	4	3	Plastic cap, blue	9300-114	1		.Saddle bracket
9000-29	2	4	Transport wheel, complete	9300-115	1	20	Bush for same
5844	6	5	Lock nut M 8	9300-123	1	21	Top cover
9300-12	2	8	Screw MVBF M 8 x 16 mm	9300-122	1	22	Locking screw
9300-55	1	9	Chain 116 link	9300-134	1	23	Pressure washer
1109	1		.Chain lock	9300-210	1	24	Pedal 9/16", pair
9300-401	1	10	Crank, complete 52T	9300-207	1	25	Pedal strap, pair
9326-164	1		Magnet	9100-109	1	26	Expander screw complete
8966-175	1	11	BB cartridge bearing, complete	9100-110	1		Handle M10
8523-115	2	12	Screw M6S 8.8 M8x1x20 FZB	5866	1		Washer
8523-2	2	13	Dust cover	9300-270	1	28	Handlebar, complete
9300-60	1	14	Frame cover, right	1069-5	2	29	.Plug for handlebar
5673-9	4	15	Mounting screw LKT-TT 5x12 mm, stainless	9300-291	1	30	Expander wedge
9306-12	10	16	Plastic plug	9301-2	1	31	Frame
9300-61	1	17	Frame cover, left				



Article no.	Qty.	Pict.no.	Description	Article no.	Qty.	Pict.no.	Description
9300-30	1	1	Frame for equipment	5768	4	27A	Mounting screw for cover
9300-21	4	2	Screw MVBF 6 x 16 mm	5866	3	28	Washer
5863	4		Washer	9300-36	1		Meter panel, complete
5843-9	5	3	Nut M6	9339-100	1	29	.Meter panel
9300-22	1	4	Tension lever	9000-17	2	30	.Spacer
14333-9	1	5	Screw M6 x 45 mm	9300-93	1	31	.Meter reader 7 kp
9300-25	1	6	Tension screw M8, complete	9000-103	1	32	.Screw
9100-20	1	8	Spring	9300-88	1	33	.Weight lever
9100-26	1	9	Tension cylinder, complete	19001-6	2	34	.Ball bearing 6001-2Z
14358	1	12	Screw M8 x 40 mm	9300-86	1	35	.Axle
5844	1	13	Lock nut M8	9300-87	1	36	.Lock ring SgA 12
9300-3	1	14	Flywheel with sprocket, 22 kgs	9000-88		37	.Axle length 70 mm
5799	2	15	.Nut	9100-89		37	.Axle, length 52 mm
9000-12	1	16	.Chain adjuster, pair	9100-90		37	.Axle, length 35 mm
9300-18	1	17	.Axle, length 132 mm	9100-91		37	.Axle, length 85 mm
9000-17	1	18	.Spacer	9000-89	1		.Set screw for same
9300-17	1	19	.Spacer, 23 mm	9339-21	1	38	Screw
9000-15	1	20	.Locking ring SgH 028	5862	2	39	Washer
19001-6	2	21	.Ball bearing SKF 6001-2Z	9000-102	1	40	Wing nut
9106-13	1	22	.Sprocket , 14 t	9300-94	1	41	Stop
9106-14	1	23	.Connection for same	9300-99	2	42	Plastic stop
9300-170	1	24	Digitalmeter	5671-9	1	43	Screw M5 x 10 mm
2142	1		Battery 12 x 50 mm	9103-62	1	44	Brake belt, compl.
9326-162	1	25	Crank sensor with cable	9300-92		47	Washer
9103-40	2		Screw for crank sensor	5675-9	1	48	M. screw
9126-75	1	25A	Screw RXS B8 x 9.5 FZB	9339-98	1		Chest belt
9326-166	1	25B	Sensor holder	9300-350	1		PC program
9326-263	1	26	Cable 620 mm				
9300-66	5		Holder for cable				
9300-142	1	27	Instrument cover				