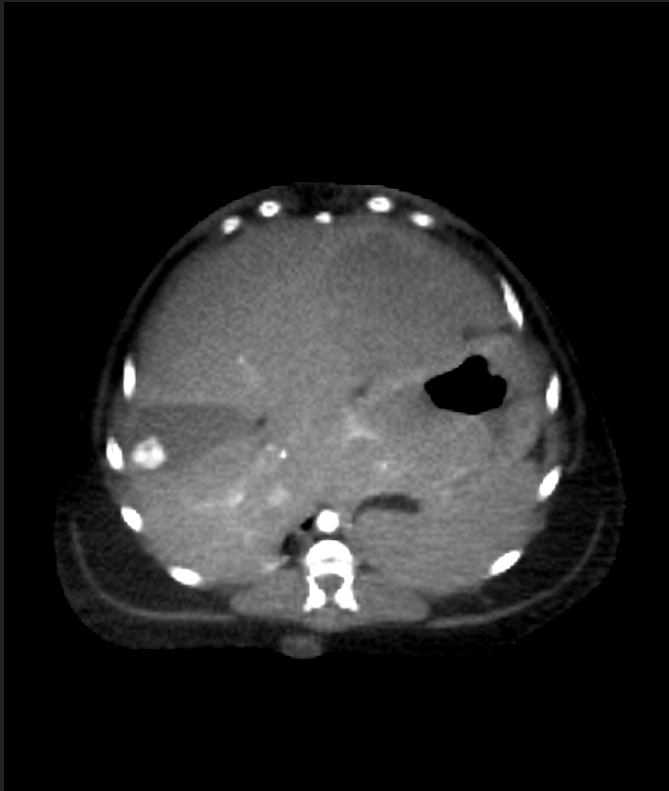


CLINICAL CASES

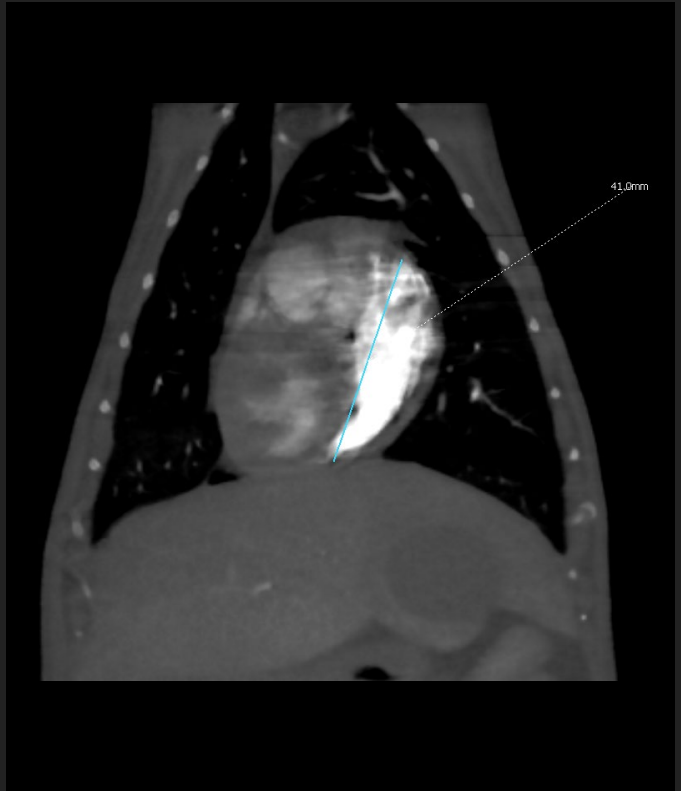
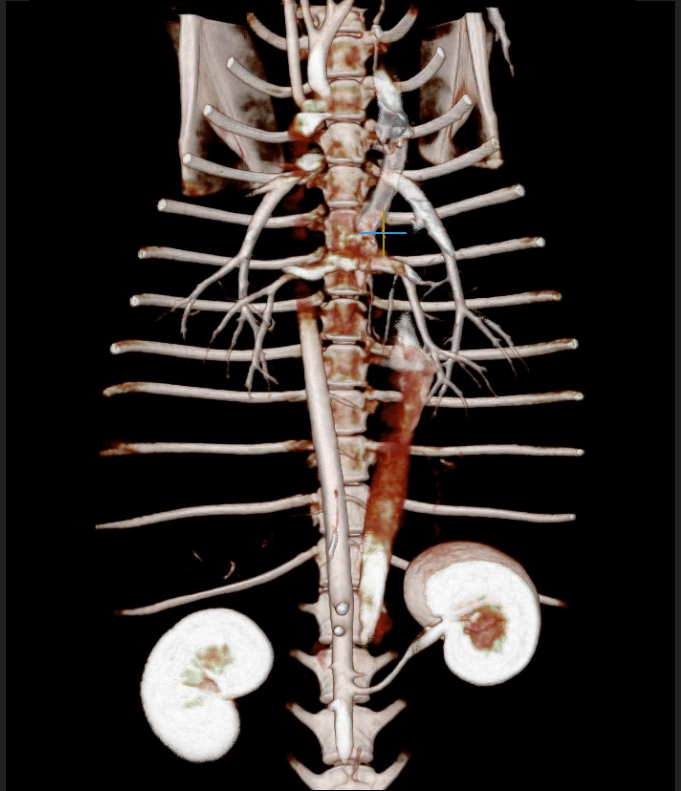
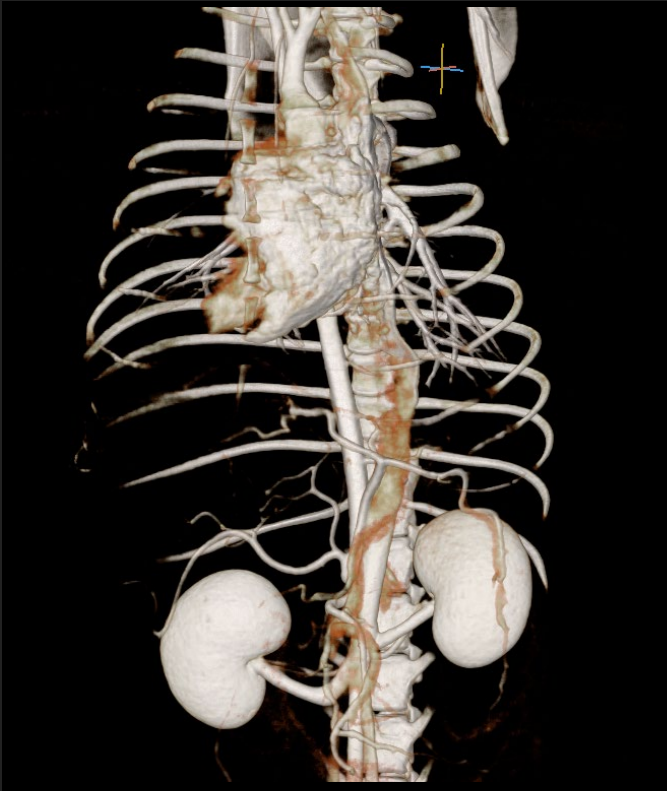
Myvet CT i3D

Mixed breed, 16yrs, 4kg, Abdominal mass



Hepatobiliary tracts

- a well-defined, round shaped, bone attenuated material in GB
- Rt. side displaced GB, liver lobes, and portal vein
- a small, well-demarcated, irregular margined, contrast non-enhancing hypoattenuated lesion in Rt. medial liver lobe



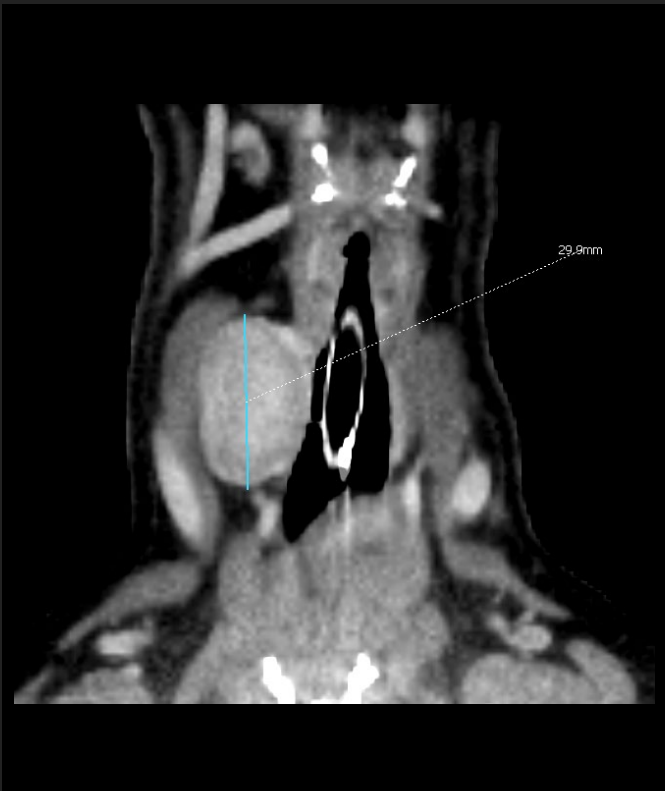
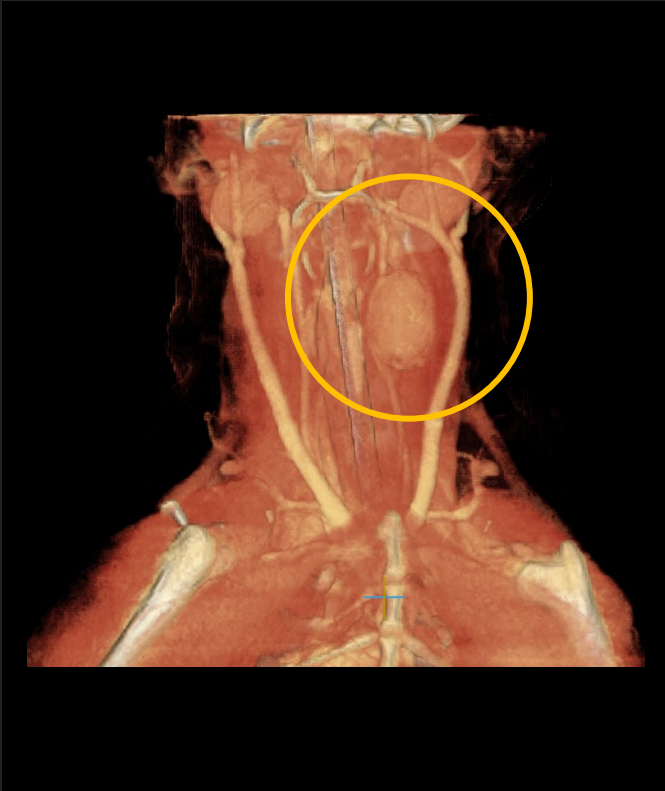
Thorax

- Wide- based dome shaped soft tissue attenuated cutaneous mass in Lt. sided ventral upper abdomen
size : 41 mm x 8.6 mm x 35 mm
mildly heterogenous contrast enhancement of the mass
- No evidence of pulmonary nodules

CT-DDx.>

- cutaneous mass : MGT/ other cutaneous neoplasia
- Lt. axillary lymphadenopathy : reactive vs regional LN metastasis

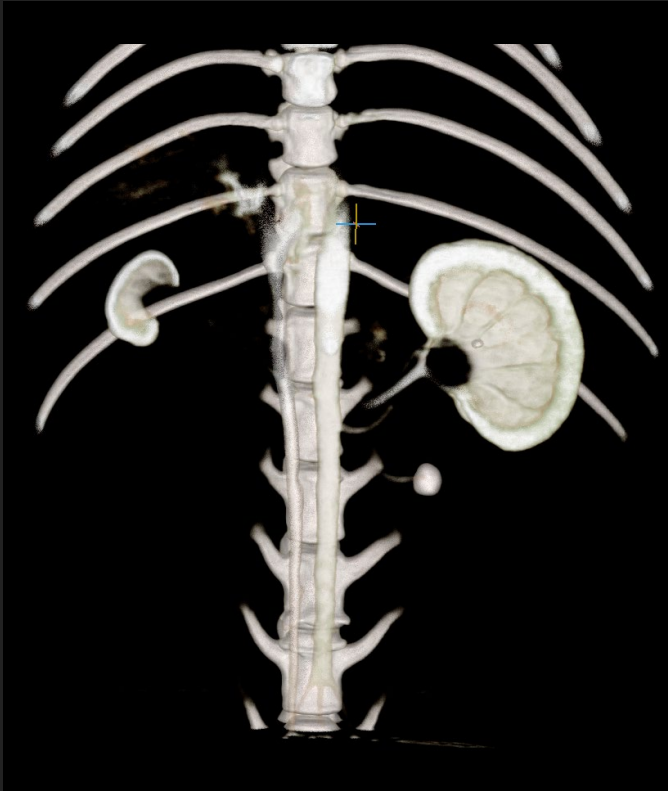
Pomeranian, 5yrs, 11kg, Cervical lesion



Cervical lesion

Oval shaped, encapsulated homogenous soft tissue attenuated mass in cervical lesion

- mass location : just right lateral to cervical trachea of C3 level
- mass size : 30 mm (L) x 26 mm (H) x 18.7 mm
- mass effect : mild displacement of trachea to left side, medio-dorsal displacement of Rt. common carotid artery, no compression of trachea and Rt. common carotid a.



Lt. kidney and ureter

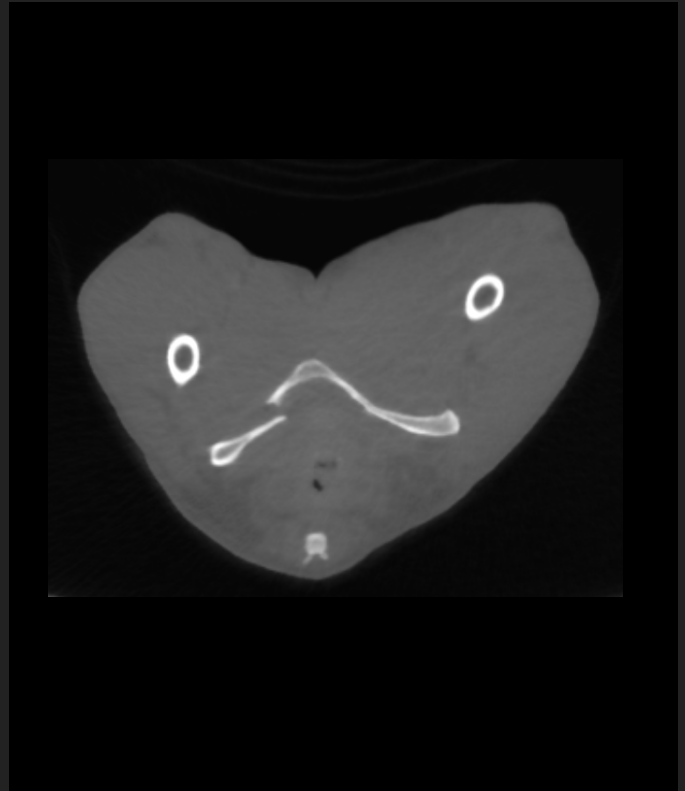
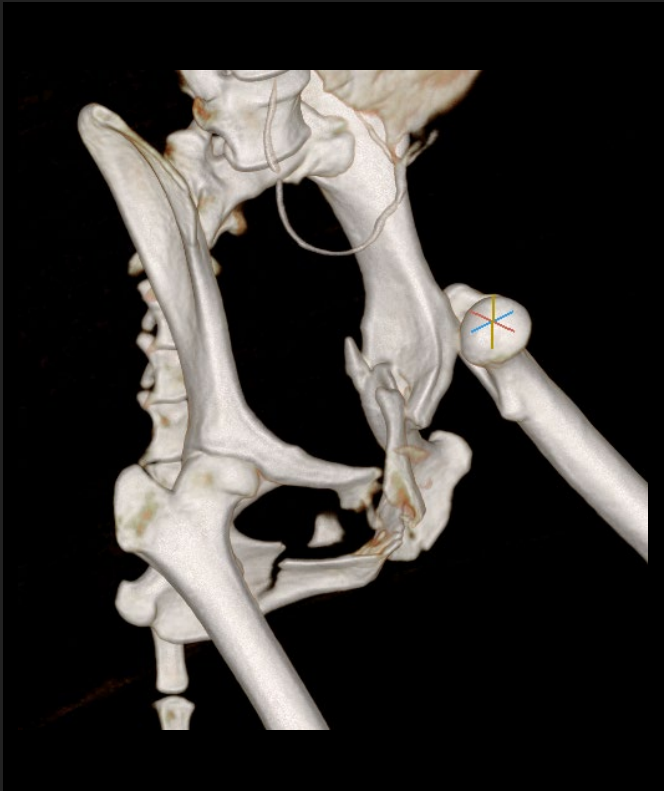
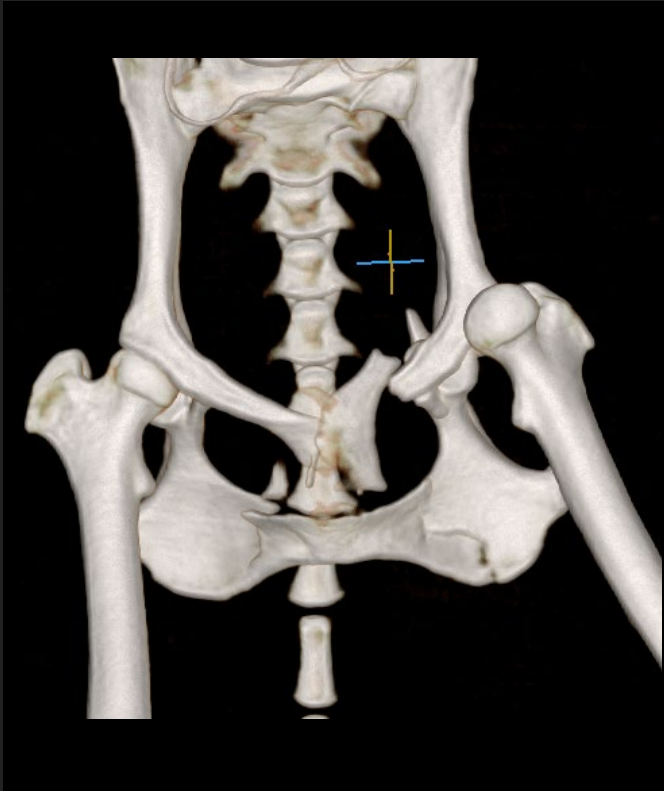
- a tiny bone attenuated material in Lt. kidney
- moderate dilatation of Lt. renal pelvis (10 mm)
- moderate dilatation of Lt. ureter (6 mm)
- a well-defined bone attenuated material in Lt. proximal ureter

Dx.

- hydrocephalus [Lt. kidney] & Lt. hydroureter
- Lt. renal calculus
- Lt. ureteral calculus



Mongsil, Maltese, 8yrs, 4.5kg, Pelvic fracture



CT-Dx.>

- Rt. coxofemoral joint luxation
- bilateral sacroiliac joint subluxation
- chip Fx. of Lt. iliac wing
- pubic symphysis Fx.
- bi. ischium Fx.

Maltese, 8yrs, 4.5kg, Pelvic fracture



CT-Dx.>

- Rt. coxofemoral joint luxation
- bilateral sacroiliac joint subluxation
- chip Fx. of Lt. iliac wing
- pubic symphysis Fx.
- bi. ischium Fx.