

**INTELECT® SHORTWAVE DIATHERMY**





Chattanooga Group is the world's largest manufacturer of rehabilitation equipment for treating musculoskeletal, neurological and soft tissue disorders. For over six decades, Chattanooga Group has set a benchmark for leadership, reliability and excellence. Our products contribute to better treatment outcomes in hospitals, clinics and home settings worldwide. We lead the physiotherapy industry by example, through continuous innovation, providing real-world solutions for clinicians and their patients.

Chattanooga Group is part of DJO Incorporated. DJO is a leading global developer, manufacturer and distributor of high-quality medical devices that provides solutions for musculoskeletal health, vascular health and pain management. The Company's products address the continuum of patient care from injury prevention to rehabilitation after surgery, injury or from degenerative disease. This is achieved by combining the synergies of many rehabilitation companies under one umbrella. **DJO is the House of Quality Brands.**

AIRCAST

CefarComplex

CHATTANOOGA  
GROUP

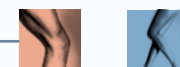
DJO  
surgical

DONJOY

Empi

ORMED

PROCARE





# Intelect® Shortwave 100

## What is Shortwave Diathermy and How Does it Work?

Shortwave diathermy is an unattended therapy utilized to treat a wide variety of orthopedic and physiotherapeutic conditions. Diathermy produces high frequency, oscillating electromagnetic energy which is absorbed by the soft tissues. This, in turn, increases cellular metabolism resulting in soft tissue healing.

Shortwave diathermy is indicated to increase circulation, decrease pain, decrease inflammation, increase ROM, influence muscle tone and facilitate the sub acute healing phase.



# Intellect® SHORTWAVE100

Chattanooga Group is proud to introduce their latest innovation, the Intellect Shortwave 100. Decades of experience in rehabilitation device manufacturing has resulted in a diathermy unit that is revolutionary in design, style and application.

Intellect Shortwave 100 comes with an abundance of features not found on other diathermy units in the market. Despite the list of impressive features, the user interface is remarkably intuitive and simple to use.

- Full color LCD touch-screen interface
- Multilingual software
- Treatment setup via Thermal Dosimetry, Quick-link Indications or Clinical Protocols™
- 200 User-defined protocol storage slots
- Over 90 Clinical Protocols on board
- Clinical Resources include
  - Full color graphics library of anatomical images and pathologies
  - Applicator placement images
  - Diathermy rationale
  - Diathermy contraindications



Therapist Side



**Applicators:**

Intelect Shortwave 100 is engineered to accept both capacitive and inductive applicators. The capacitive electrodes, also referred to as condenser field electrodes, are characterized by the use of two applicators positioned on either side of the body area to be treated. These produce strong electrical fields and are recommended for superficial body areas. Inductive electrodes, also known as eddy-current electrodes, typically consist of a single inductive drum positioned directed over the body area to be treated. Inductive applicators produce a strong magnetic field and are best for deeper soft tissue body areas.\*

**Inductive Electrodes:**

Diplode

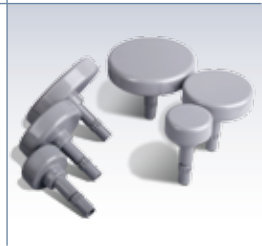


Monode



**Capacitive Electrodes:**

80mm, 120mm & 165mm sizes



Flexible Rubber Elec. w/ felt layer



**Treatments:**

Diathermy knee treatment



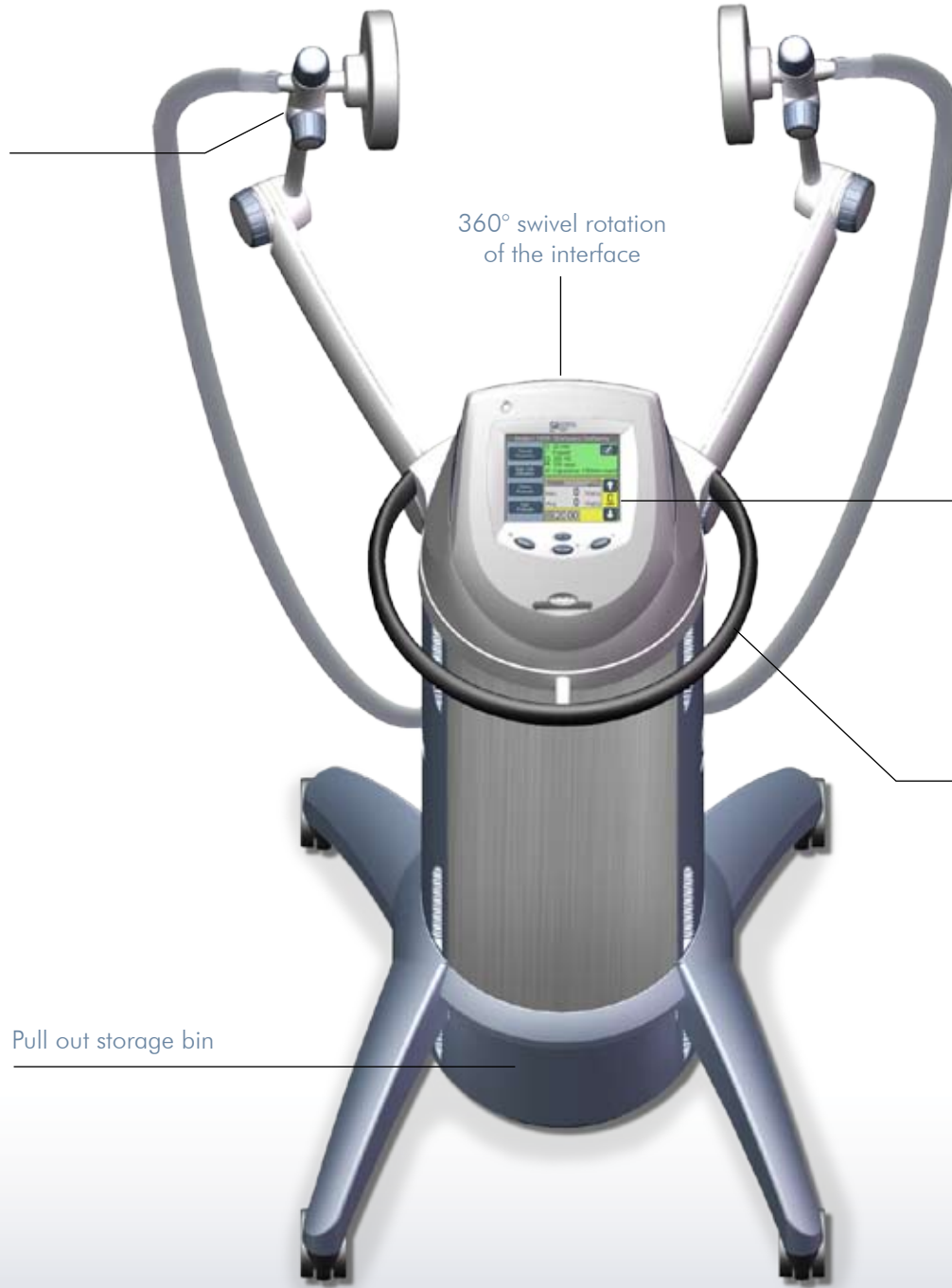
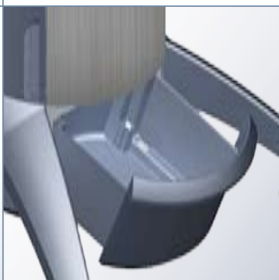
Diathermy shoulder treatment



Patient Side

\*Reference: Evidence-Based Guide to Therapeutic Physical Agents.

Fully adjustable electrode arms



360° swivel rotation of the interface

Color touch screen

Grab bar

Pull out storage bin

Access Clinical Protocols by selecting the body area to be treated



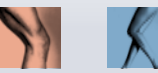
Clinical Protocols provide appropriate treatment suggestions



Fully editable treatment parameters



Library of anatomical graphic illustrations



Intelect Shortwave 100 provides both thermal and athermal effects through qualitative dosimetry selection (I-IV). This unit will meet the requirements for the vast majority of diathermy clinical applications.

- Power generation via a high efficiency, microprocessor controlled, solid state amplifier
- Continuous (100 Watt) and pulsed (200 Watt) power modes
- Average power of 64 Watt in pulsed mode (max)
- Fully adjustable pulse rate and pulse width
- Adjustable treatment timer
- Automatic resonance tuning
- Full color touch screen
- Two output channels
- 360° Swivel rotation of interface
- Robust, multi-jointed, pivoting electrode arms
- Patient safety switch
- Multilingual software
- Over 90 Clinical Protocols™
- 200 User Protocol slots
- Over 140 electrode placement images
- Full graphic library of anatomical and pathological images
- Patient Documentation of treatment sessions, pre and post treatment patient pain scales, pain mapping and pain types all captured on Patient Data Cards
- 2 year warranty

## ORDERING INFORMATION

### Intelect Shortwave 100 Diathermy

**1602** - Intelect Shortwave 100

#### Standard Accessories

- 020453217** - 120 mm capacitive electrodes (2x)  
**14712** - Connection cable (2x)  
**14762** - Indicator discharge tube  
**14668** - User Manual on CD  
**14761** - Electrode arms (2x)

#### Optional Accessories

- 020453218** - 165 mm capacitive electrodes  
**020453216** - 80 mm capacitive electrodes  
**020969553** - Diplode  
**02200002** - Monode  
**020453266** - 180 x 120 mm soft rubber electrode (includes one pocket and one intermediate felt layer)  
**020453267** - 250 x 145 mm soft rubber electrode (includes one pocket and one intermediate felt layer)

## TECHNICAL SPECIFICATIONS

**Mains Power:** 100-240 VAC, 50-60 Hz  
**Output Frequency:** 27.12 MHz  
**Output Power:** 100 W Continuous Mode / 200 W Peak in Pulsed Mode  
**Weight:** 27 kg (60 lbs.)  
**Dimensions (WxDxH):** 61 x 30.5 x 115.5 cm (24"x 12"x 45.5")  
**Pulsed Width:** 20-400 μseconds  
**Pulsed Rate:** 10-800 Hz  
**Treatment Time:** 1-60 minutes  
**Electrical Safety Class:** Class B  
**Safety Tests:** IEC/EN/UL 60601-1, IEC/EN/UL 60601-2-3

